

DASHBOARD Control and Monitoring

The 8310 openGear™ frame offers remote control and monitoring with the combination of 8310-N-BNC, network interface card, and DASHBOARD, GUI application. This allows users to remotely monitor and control parameters on openGear modules that support remote control.

Remote control simplifies the setup of numerous modules in a large installation and offers the ability to centralise monitoring. The control system is built on Ethernet and TCP/IP, which allows remote access across both LAN and WAN architectures.

Monitoring

A network of frames and cards can be monitored allowing end users to quickly isolate and correct potential problems from a central monitoring station.

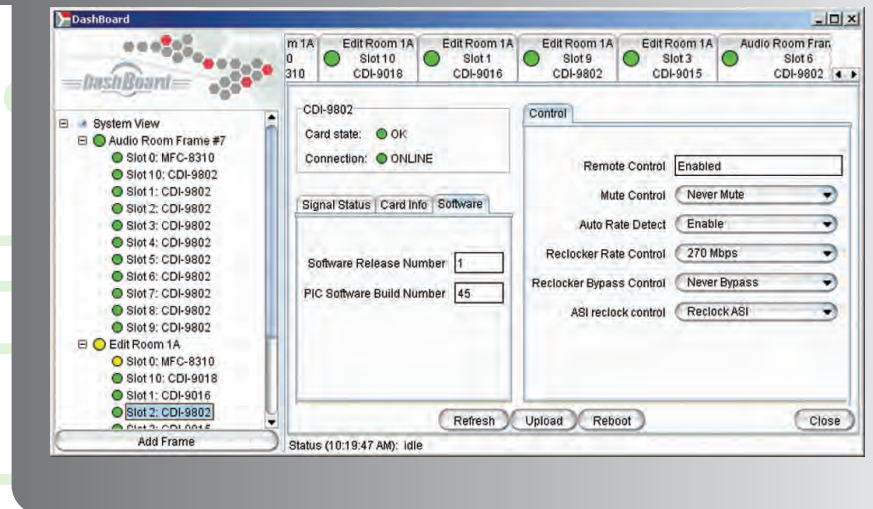
Three levels of monitoring/alarms are available. Severity of alarm is defined by varying color:

- Green: System is performing with no errors.
- Yellow: Minor alarm indicating potential problem.
- Red: Major alarm.

DASHBOARD

DASHBOARD is a free control and monitoring application for the openGear™ platform.

It allows users to view all frames on a network with control and monitoring for all populated slots inside a frame. Control and monitoring is defined by the card under control and therefore will vary based on the implementation and functionality available.



Features and specifications subject to change without notice



MICHAEL STEVENS & PARTNERS LTD

INVICTA WORKS ELLIOTT ROAD, BROMLEY, KENT, BR2 9NT UK

TEL: +44 (0)20 8460 7299 FAX: +44 (0)20 8460 0499

E-MAIL: SALES@MICHAEL-STEVENS.COM WEB: WWW.CHROMATEC.COM WEB: WWW.MICHAEL-STEVENS.COM